



don whitley  
scientific  
excellence in microbiology

## Sample Preparation Labelmaster II®



**Labels and marshals up to 1000  
Petri dishes per hour of different  
media types and supplies them  
pre-sorted**

**Provides you with traceability of  
media batches**

**Your staff are freed from the  
tedium of plate labelling**

**Can connect to LIMS or operate  
as a stand-alone unit**

Labelmaster® is an automated system for labelling and organising Petri dishes. It has been designed to print barcode labels and affix them to Petri dishes to help laboratory staff identify and sort samples quickly, easily and accurately. A printing unit outputs labels that are directly applied to the edge of the bottom part of Petri dishes.

These are then stacked and sorted, sample by sample.

There are several advantages to applying the label to the bottom part of the Petri dish: automatic plate readers can be used; the barcode is protected by the lid from scratches and spills; and if the lid is dislodged, the label remains attached to the part containing the sample.

Used in all types of laboratory, Labelmaster® handles up to 1000 plates per hour with a pneumatic plate delivery system to improve speed and accuracy. This time saving device has the capacity to stack 1075 dishes as standard: 5 columns of 50 plates plus 5 columns of 5 stacks of 33 plates – so 10 different types of media can be used.

An optional storage unit increases the capacity to 1900.

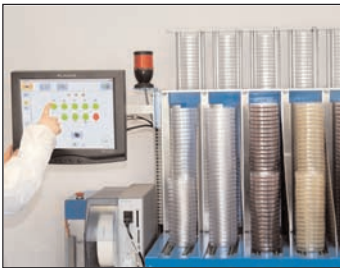
Clear, standardised labelling means fewer mistakes, full traceability and reduces human errors.



## Increased storage capacity

One of the main options available for the Labelmaster® is the ability to increase storage capacity should your laboratory throughput increase. The storage unit available as an option increases the total capacity from 1075 Petri dishes to 1900.

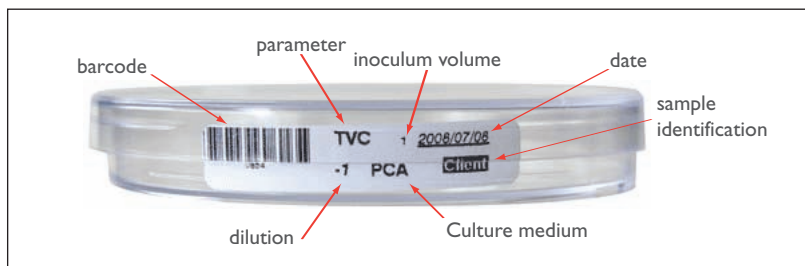
This optional storage unit consists of 25 stacks of 33 plates, giving additional space for another 825 Petri dishes.



## Customise your plate labels

Labelmaster® comes complete with integrated PC and touch screen, and you can customise your labels. Field 1 is the barcode; Field 2 is the name of the medium used; and Fields 3 to 20 are available to you to customise the information on your labels. Examples of details you might want to display on the label are:

- Sample or patient name
- Media type
- Dilution/Strain
- Incubation temperature
- Date of analysis
- Name of flora
- Inoculum volume



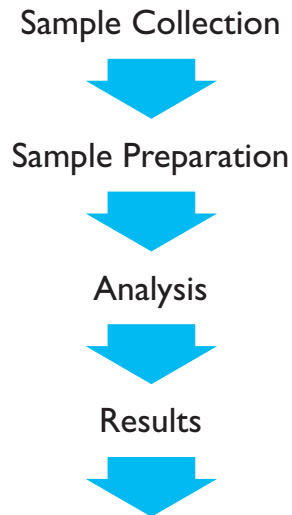
## Consider the benefits

These are some of the benefits of Labelmaster®:

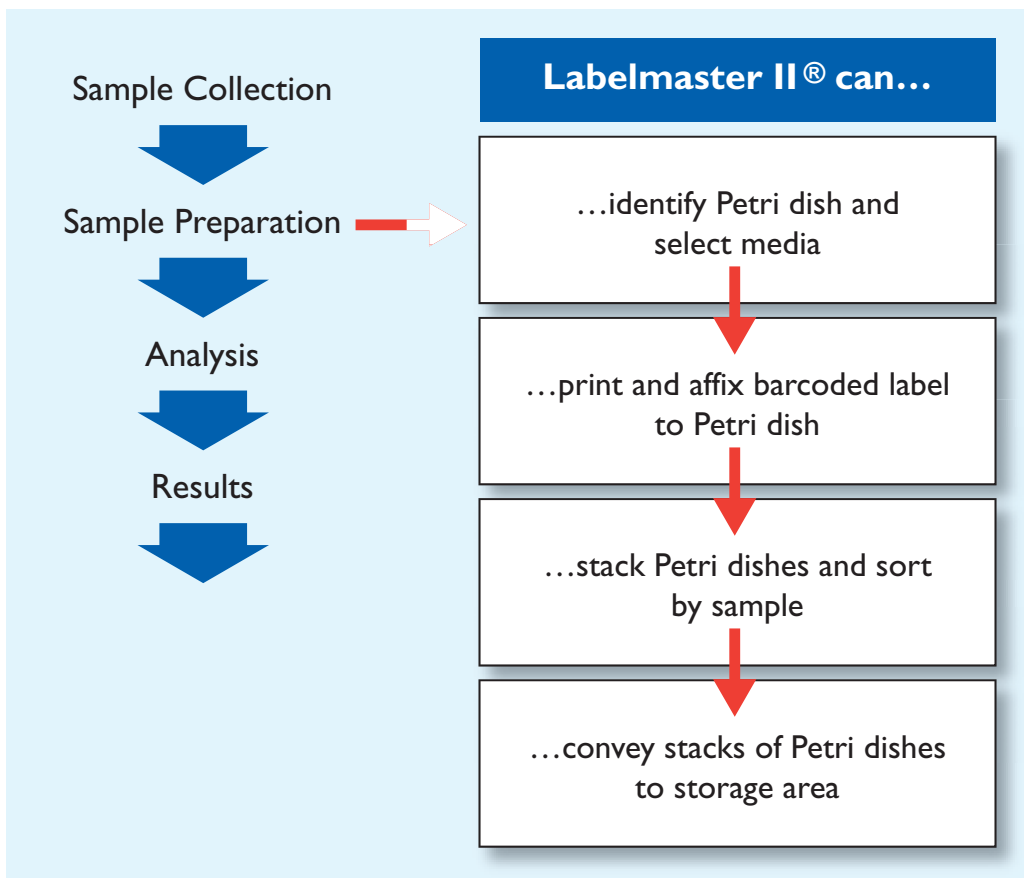
- Clear, machine-printed labels are easier to read than handwritten ones, therefore fewer identification errors
- Multiple types of media can be handled, labelled and stacked ready for collection
- Provides full traceability of media batches
- Your staff are freed from the tedium of plate labelling and can concentrate on other tasks
- Can be used with your LIMS system or operate as a stand-alone unit

# What can Labelmaster II<sup>®</sup> do for you?

Suppose your usual process is something like:



If we look at this again with the inclusion of Labelmaster II<sup>®</sup>:



### Additional Features

Labelmaster® comes complete with integrated PC and touch screen, and you can customise your labels. Each label has the capacity to feature 7 parameters (2 are compulsory) but there are 20 parameters to choose from, such as:

Sample or patient name

Media type

Name of flora

Date of analysis

Dilution/Strain

Inoculum volume

Incubation temperature

### Specification

### Technical Features

Throughput	Up to 1000 plates per hour
	1075 plates as standard or up to 1900 with optional storage unit.
	Inlet Stock: 5 columns of 50 plates and 5 columns of 5 stacks of 33 plates.
	Outlet stock: 450 plates in 30 stacks of 15 plates.
L x D x H	1150 x 800 x 1700mm
Power Supply	230V, 16A (50Hz)
Compressed air supply	Filtered dry air. Pressure 5-8 bars (5 bars minimum).
	Air tank volume: 50 to 100 litres recommended

Order Code:  
M00044      Labelmaster II®

Labelmaster® is a registered trademark of AES Laboratoire, France

In the interests of a policy of continuous product improvement the company reserves the right to alter product specifications without prior notice. All rights reserved.  
© 2008 Don Whitley Scientific Limited.

### Don Whitley Scientific Limited

14 Otley Road, Shipley, West Yorkshire, BD17 7SE, England.

Telephone: +44 (0)1274 595728 Fax: +44 (0)1274 531197

Website: [www.dwscientific.co.uk](http://www.dwscientific.co.uk) Email: [sales@dwscientific.co.uk](mailto:sales@dwscientific.co.uk)