



Sample Preparation Petri-Flow™: Dishes on Demand

Technical Specifications

Options and Accessories

A wide selection of options and accessories are available to help tailor the system to your specific requirements. Please discuss this with our sales staff.

Order Example:

Petri-Flow™ Start Up system

with:

- 4 x Petri-Stack™, providing 8 lanes of 60 dishes
- 1 x Petri-Print™ non-contact printing
- 1 x Mini-Stack™ dish stacking system
- 1 x Petri-Transfer™ conveyor system
- 2 x Analyst Workbenches
- 1 x Inoculation/Analysis Workbench



Modular system for automating the flow of Petri dishes in the laboratory

Customised for individual laboratories and work flow systems

Modern, ergonomic design

Space efficient and expandable

Add printers, dispensers, dilution stations, barcode scanners and many other options

Petri-Flow™ is a laboratory solution that automates the flow of Petri dishes from receipt of sample to analysis.

From a base unit conveyor system a variety of options can be added to tailor the Petri-Flow™ system for individual requirements.

For example, you can add printers, agar dispensing systems, analysis/dilution/inoculation workbenches, barcode scanners, run-off benches, stacking systems, buffers, sorting units, mixing and cooling units. This modular and expandable system can grow with your throughput and expand with your budget.

Petri-Flow™ has been designed to ensure it is easy to keep clean and comes complete with a built-in belt cleaning attachment.

With applications in food, clinical and water laboratories, Petri-Flow™ has been designed to give you the perfect layout for your procedures and adapt to the space you have available.

The Petri-Flow™ start up system comes complete with 8 stacks of 60 dishes, a non-contact printing unit, dish stacking system, conveyor, two analyst workbenches and a bench for inoculation/analysis. Additional options can be added at any stage to future-proof your investment.

In the interests of a policy of continuous product improvement the company reserves the right to alter product specifications without prior notice. All rights reserved.
© 2010 Don Whitley Scientific Limited.

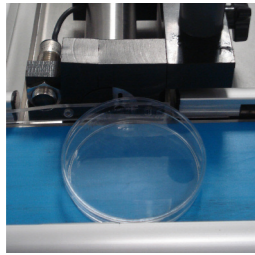
Don Whitley Scientific Limited

14 Otley Road, Shipley, West Yorkshire, BD17 7SE, England.

Telephone: +44 (0)1274 595728 Fax: +44 (0)1274 531197

Website: www.dwscientific.co.uk Email: sales@dwscientific.co.uk

OPTIONS



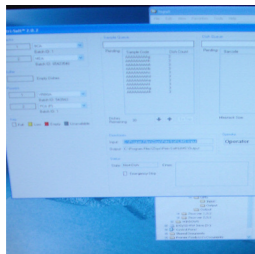
Vo1007 Petri-Print™

Non-contact printing that eliminates the need for manual coding and labels for Petri-dishes. Printing options are also available for other container types.



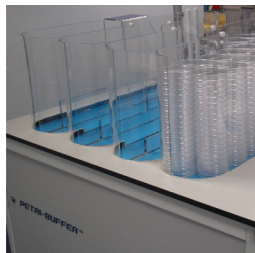
Vo1009 Petri-Stack™

A dish dispensing system with magazines that hold up to 60 dishes each. The magazines are fully autoclaveable.



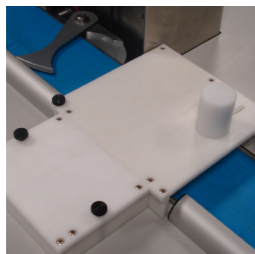
Vo1008 LIMS Connection

The software that controls and integrates with your own LIMS system.



Vo1010 Petri-Buffer™

An add-on system that allows bulk delivery of up to 1400 dishes.



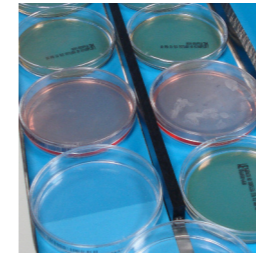
Vo1011 Petri-Scan™

Scans dishes in-line to send to Petri-Pour and Petri-Sort, so no need to pregroup samples.



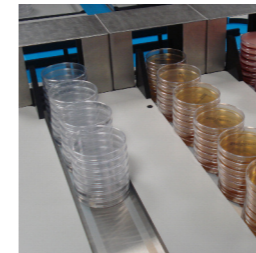
Vo1013 Petri-Pour™

Rapid heated agar pourer that lifts the Petri dish lid and accurately dispenses the agar.



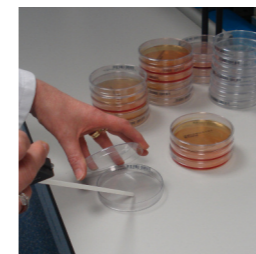
Vo1014 Petri-Cool™

Dishes are agitated along the conveyor to mix and cool prior to sorting.



Vo1015 Petri-Sort™

Sorts and stacks poured dishes according to incubation regime.



Vo1016 Analyst Workbench

A work area for the analyst to use for dilution and inoculation.

Cost savings through automation

Allow us to calculate the potential cost savings for your laboratory.

Give us a call and we'll tell you what information we need to be able to prepare a costing analysis.

Within 48 hours we will call you back to arrange for one of our sales people to call and show you the savings that can be made with the Petri-Flow™ system.

Tel: 01274 595728 or email sales@dwscientific.co.uk