

About Don Whitley Scientific

For over thirty years we have pioneered the worldwide development and use of workstations.

Worldwide technical support.

More than 2500 of our workstations are in use in fifty countries.

Scientific guidance available from our own in-house laboratory.

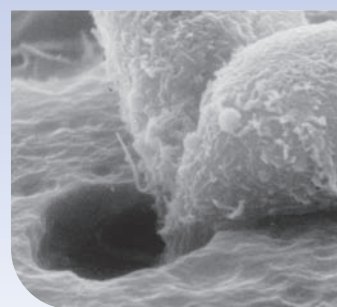


Image courtesy of BD Biosciences

'Hypoxystation' and 'your environment defined' are registered trademarks owned by Don Whitley Scientific Limited

Product details

The Hypoxystation is the ideal product for cell culture research. Our new workstation replicates conditions comparable to those occurring in vivo.

You will have the option to:

- Control O₂ in 0.1% increments from 0.1% to 20% with closed loop feedback
- Control CO₂ in 0.1% increments from 0.1% to 15% - fixed level of approximately 5% when the optional feedback system is not specified
- Carry out straightforward calibration of gas sensors
- Control temperature from 5°C above ambient up to 45°C
- Switch easily between hypoxic and anoxic environments
- Use each porthole as a small airlock for rapid sample transfer

The H85 Hypoxystation has been designed to combine functional reliability with operational comfort.

- Touch screen interface
 - Allows you to easily monitor all parameters simultaneously
 - Eliminates the need for any other dials, switches and gauges.
- Large, 30 litre airlock with powered internal door provides effective sample and equipment transfer in the fastest possible time.
- Patented oval gloveports operated by wireless footswitch, allow gloved or bare hand working.
- Optional refrigeration unit designed to operate at 8°C (other set temperatures are available).

Every chamber is heat-treated during manufacture to increase the durability of the fabricated structure and ensure a long working life.

Don Whitley Scientific Limited

14 Otley Road, Shipley, West Yorkshire, BD17 7SE, England.

Telephone: +44 (0)1274 595728 Fax: +44 (0)1274 531197

Website: www.dwsscientific.co.uk Email: info@dwsscientific.co.uk

H85 Hypoxystation / 1009-01 / July 2011

Whitley Workstations H85 Hypoxystation



don whitley
scientific

your environment defined®

Your environment defined®

Specifically designed to create normoxic, hypoxic and anoxic conditions within a controlled and sustained workstation environment, this workstation is ideal for all research requiring the ability to accurately control oxygen, carbon dioxide, temperature and humidity.

With such accurate control and the ability to manipulate cells in situ without altering the incubation environment, cell biology research can be performed over a comprehensive range of oxygen tensions with precision and total confidence.

Every aspect of system functionality has been thoroughly considered – a 30 litre airlock, environmental control systems, touch screen layout, workspace visibility, fabrication quality and our unique motorised gloveport system.

The H85 Hypoxystation has been designed in conjunction with cell biology researchers to ensure ultimate performance combined with user comfort, convenience and reliability.



Designed specifically for hypoxia and anoxia research applications.

O₂ levels monitored continually to provide you with better control and more confidence in your results.

CO₂ monitoring is available as an option.

Remote controlled motorised gloveports.

Precise and stable temperature and humidity control.

Integrated gas control equipment minimises bench space requirements – no bulky external gas mixing system.

Optional refrigeration unit available.



www.dwsscientific.co.uk



The unique patented portholes provide both sample transfer and operator entry and exit



Optional internal power sockets and CO₂ feedback

Equipment and bulk sample transfer is very convenient using the 30 litre airlock



Touch Screen

Full-colour 5.7" touch screen display featuring intuitive software to access a sophisticated microprocessor-based operating system.

Equipment Enclosure

Contains all instrumentation to control oxygen, carbon dioxide, temperature and humidity.

Oxygen Sensor and Calibration

Simple oxygen sensor calibration without removal from the chamber.

Optional Internal Socket

Some users need to operate electrical instrumentation inside the workstation. A fused mains power supply and country-specific electrical socket is available as an option.

Chamber

High quality, clear acrylic structure annealed during fabrication providing generous incubation and working areas.

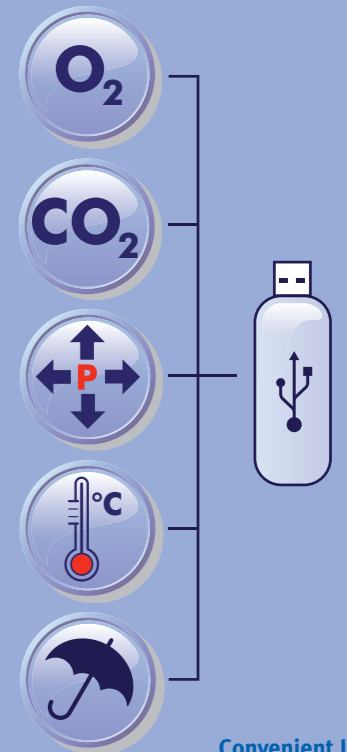


Airlock

Equipment and bulk sample transfer is very convenient using the 30 litre airlock.

Portholes

Patented motorised multi-functional portholes for operator ingress and egress and sample transfer. Fitted with our unique sleeve system.



Convenient USB memory stick download of stored environmental parameters

Other System Options

Factory-Fitted Options	Ao5009	Refrigeration Unit - The standard refrigeration unit is designed to operate at $8 \pm 1.5^\circ\text{C}$ when located in an ambient temperature of $21 \pm 2^\circ\text{C}$. Other set temperatures can be achieved by discussion with our product development staff.
	Ao6102	Vacuum Take-off - Provides a method of aspirating used liquid media from inside the workstation, safely and without risk of spillage or contamination.
	Ao6106	Double Internal Socket - (1 Amp maximum)
	Ao6107	Gas Sample Port - This allows the user to take a sample of the atmosphere inside the workstation for further analysis.

Software Options	Ao6109	Data Logging - Allows the data recording of environmental parameters inside the workstation - oxygen, carbon dioxide, temperature and humidity levels and cabinet internal pressure. The collected data can be downloaded via a USB interface to a memory stick and transferred to a PC for further analysis.
	Ao6108	Data Logging with Oxygen Profiling - Allows the user to pre-programme different oxygen levels. The user can determine how long the workstation atmosphere remains at a particular oxygen level, when to return to a previous level, remain static or adjust to a different gas concentration.
	Ao6100	CO₂ Monitoring - Hardware and software to monitor and control CO ₂ in 0.1% increments from 0.1% to 15%

Upgrades and Accessories	Ao6110	Trolley - Custom-designed trolley frees up bench space and allows the Hypoxystation to be moved easily between laboratories.
	Ao6103	Letterbox - Ideal for quickly transferring small quantities of samples.
	Ao2130	Catalyst - Required when you want to create anoxic conditions in the workstation.
	Ao2129	Anotox - Use in conjunction with Catalyst to maintain anoxic conditions.



Simple oxygen sensor calibration without removing the sensor from the chamber

Wireless footswitch for convenient operation of porthole sequences

