



don whitley
scientific
excellence in microbiology

Bacterial Enumeration Whitley Automated Spiral Plater



The Whitley Automated Spiral Plater (WASP) eliminates the need for serial dilutions, offers a reduction in cost per test and standardises counting methods

Used extensively in the food industry to test for safe levels of bacteria

Can be utilised as a quality assurance and research tool in the pharmaceutical, cosmetic, water and dental industries

Developed in response to your changing needs, the Whitley Automated Spiral Plater continues to offer automation, repeatability and flexibility for spiral plating and eliminates the need for serial dilutions.

With your working practices very much in mind, thorough attention has been paid to the design of WASP to ensure maximum ease of operation.

The styling of WASP reflects its status as a precision instrument.

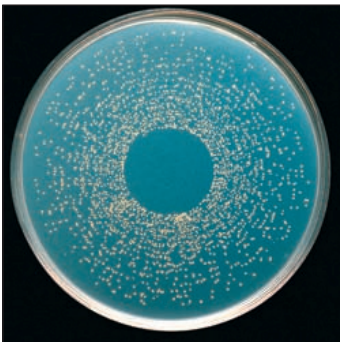
Whitley Vacuum Source 602



Vacuum Source Features

The WASP is used in conjunction with the Whitley Vacuum Source - necessary for drawing liquids through the system. If a compatible source of vacuum is already present in the laboratory, this item is not always necessary.

Discrete, countable colonies



Counts from 30 to 4×10^5 cfu/ml can be made using only one Petri dish

The benefits of WASP

At the heart of WASP is a microprocessor – controlling all aspects of the liquid sample deposition onto the surface of a rotating agar plate. Variations in agar height are accommodated by the unique stylus geometry. The stylus arm dispenses liquid sample either uniformly across the plate or as a continuously decreasing volume (equivalent to a thousand-fold dilution). Pre-programmed options allow liquid sample to be dispensed in a variety of ways, utilising up to 400µl of sample.





One feature unique to WASP is its ability to load sample, inoculate a plate and then clean the stylus with only one keystroke. WASP has an automatic cleaning cycle, with provision for sterile water and a self-levelling bleach reservoir system. Automation of the cleaning cycle gives the operator time to remove the inoculated plate and prepare for the next sample, thus streamlining operation.

To ensure that less-experienced users can operate the instrument with minimal risk of inaccurate results, the user-selectable parameters can be chosen and then locked. All controls are accessed via a full-colour purpose-designed membrane keypad.



WASP is a new generation spiral plater

Available counting ranges using WASP

Deposition volume on a 9cm Petri dish	Counting range on a 9cm Petri dish	Deposition volume on a 15cm Petri dish	Counting range on a 15cm Petri dish	Number of plates possible without refilling
50µl	400 to 4×10^5 cfu/ml	52.5µl	400 to 4×10^6 cfu/ml	
100µl	200 to 2×10^5 cfu/ml	105µl	200 to 2×10^6 cfu/ml	
200µl	30 to 1×10^5 cfu/ml	210µl	30 to 4×10^6 cfu/ml	
400µl	10^* to 7.5×10^2 cfu/ml	420µl	10^* to 7.5×10^3 cfu/ml	

**Total plate count*

10 and 18µl deposition volumes are available – please ask for details

The microprocessor continually monitors the syringe, carriage and turntable movements – this data can be interrogated by our service engineers. The results are then compared to factory settings, generating valuable instrument calibration data, essential for today's quality standards.

Four steps to plate inoculation



1. Sample is drawn into spiral plater



2. A pre-poured Petri dish is placed on the turntable



3. The plate is inoculated



4. The system is sanitised and ready for the next sample

Standard Features

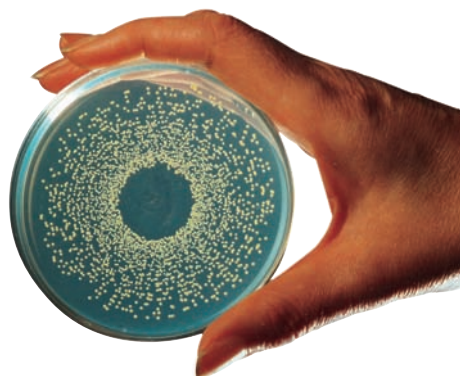
A fully automatic microprocessor-controlled spiral plater dispensing between 10µl and 400µl with variable agar height compensation; automatic cleaning cycle with a self levelling bleach reservoir and provision for sterile water; coloured membrane keypad with lockable user-selectable parameters.

Options

S00602 Whitley Vacuum Source and reservoir
S01742 15cm Plate Option Kit (for MIC testing)

Used in conjunction with

B00039 5ml Disposable Beakers (pack of 1,000)
S01990 Whitley Spiral aCOLyte Click and Count
S02000 Whitley Spiral aCOLyte Supercount
S02050 ProtoCOL SR Colony Counter
S02060 ProtoCOL HR Colony Counter
S01861 SC5 Stuart Colony Counter



Specification

Order Code: S00600
Instrument Size : Approx. 530mm x 410mm x 360mm (w x d x h)
Power supply: 100-240V - 50/60Hz
Petri dish (nominal): 9cm or 15cm
Sample volume dispensed: 10µl – 400µl
Deposition mode:– Logarithmic and uniform
Countable range without dilution: 30 to 4×10^5 cfu/ml
Vacuum: External source

In the interests of a policy of continuous product improvement the company reserves the right to alter product specifications without prior notice. All rights reserved.
© 2005 Don Whitley Scientific Limited.

Don Whitley Scientific Limited

14 Otley Road, Shipley, West Yorkshire, BD17 7SE, England.

Telephone: +44 (0)1274 595728 Fax: +44 (0)1274 531197

Website: www.dwscientific.co.uk Email: info@dwscientific.co.uk